

Electret Condenser Microphone (Omnidirectional)

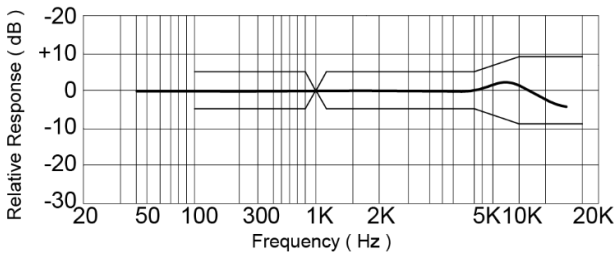
Model: CMO9445-4510-432S-1033



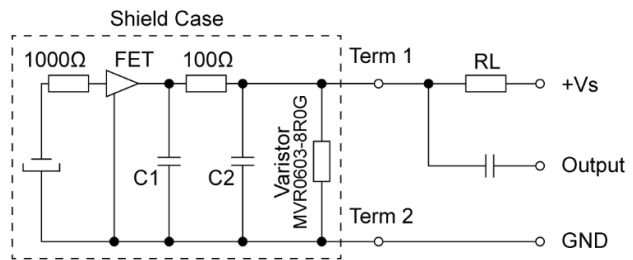
ELECTRICAL SPECIFICATIONS

	Condition	Parameter	Unit
Directivity		Omnidirectional	
Sensitivity	0dB = 1V/Pa, 1KHz	-43 ± 2	dB
Operating Voltage		1 ~ 10	Vdc
Standard Operating Voltage		4.5	Vdc
Output Impedance	1KHz, 1Pa	1K	Ω
Frequency Range		50 ~ 16K	Hz
Current Consumption	at recommended drive circuit	Max. 500	μA
Sensitivity Reduction	at 4.0Vdc	within -3	dB
S/N Ratio	1KHz, 1Pa, A-weighted	Min. 60	dBA
Terminal		Solder Pad	
Operating Temperature		-20 ~ +70	°C
Storage Temperature		-20 ~ +70	°C

FREQUENCY RESPONSE CURVE



RECOMMENDED DRIVE CIRCUIT



Vs: 4.5Vdc

RL: 1KΩ

C1: 10pF / C2: 33pF

MECHANICAL DRAWING

Dimensions in mm

Tolerance ±0.3mm Except Specified

